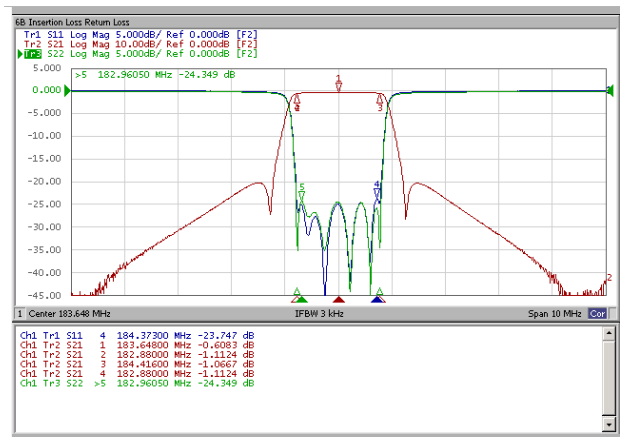
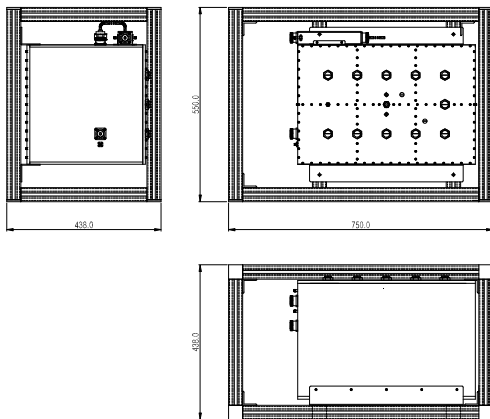
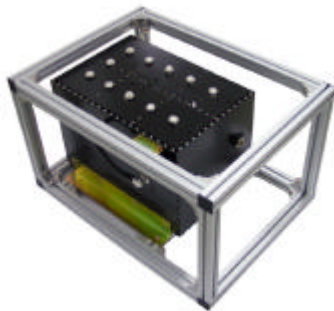


DMB(Digital Multimedia Broadcasting) DMB Output Filter(500W)-Europe



Item		Specifications	
Frequency Range		181.168~215.840MHz (CH6~CH10)	216.160~239.968MHz (CH11~CH13)
Insertion Loss (Max.)		1.5dB	1.7dB
Ripple (Min.)		1.5dB	1.5dB
Return Loss (Min.)		20dB	
Attenuation (Min.)	$F_c \pm 0.97\text{MHz}$	8.0dBc	
	$F_c \pm 1.75\text{MHz}$	40dBc	
	$0 \sim (F_c - 5\text{MHz})$	60dBc	
	$(F_c + 5\text{MHz}) \sim 2.4\text{GHz}$	60dBc	
Coupling (In/Out)		40dB \pm 1dB	
Temperature Range		-10 ~ +45	
Size (W x D x H) (mm)		550.0 x 750.0 x 438.0	
Power Rating (Ave.)		500W	
Coupling Port		SMA – Female	
In/Out Port		DIN - Female	
Weight (Max.)		40Kg	