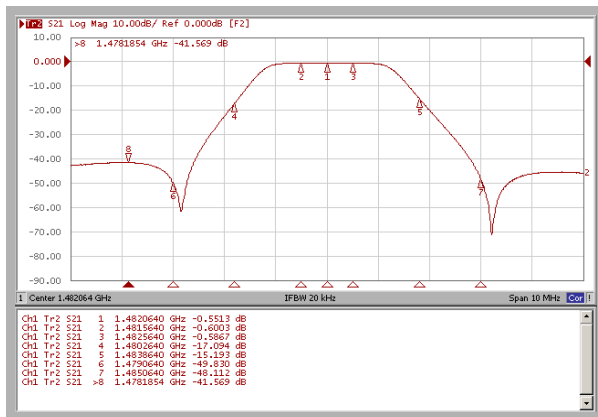
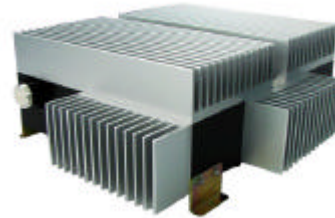
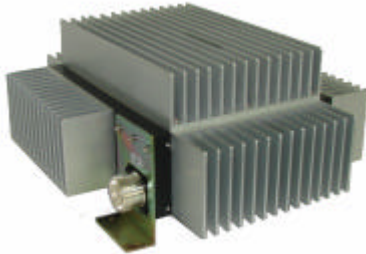
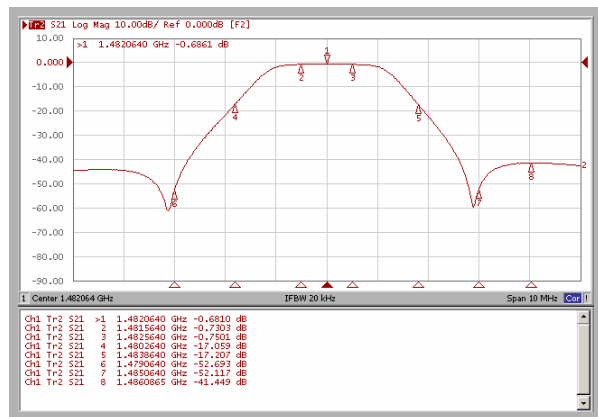


DAB(Digital Audio Broadcasting) L-BAND TDAB BPF



480W



960W

Item		Specifications	
Frequency Range		1450 ~ 1500MHz	
Insertion Loss (Max.)	Fc	0.65dB	0.8dB
	Fc ± 0.5MHz	0.7dB	0.85dB
Attenuation (Min.)	Fc ± 1.8MHz	15dB	
	Fc ± 3MHz	40dB	
	174 ~ Fc-3MHz	20dB	
	Fc + 3 ~ 3Fc MHz	20dB	
Return Loss (Min.)		26.44dB	
Group Delay (Max.)		110ns	
Temperature Range		0 ~ +50	
Port Type		7/16" DIN – Female	
Size (W x H x D) (mm)		234.0 x 194.0 x 97.0	306.0 x 266.0 x 138.6
Input Power		480W	960W
Weight (Max.)		11Kg	23Kg